

THE DAILY ITEM'S  
**PRINT+DELIVER**  
PROGRAM

The Daily Item, Weekly Item and Danville News offer the most **RELIABLE** , **DYNAMIC** , **TARGETED** , **COST-EFFECTIVE** single sheet insert program .

Enable your clients to run with the “big box” shopping centers.

Full color, glossy finish, and able to be set aside for future reference.

QUANTITY	COST/THOUSAND	PENCIL AD (PER RUN)
10,000 -19,999	\$73.00	\$150.00
20,000 -34,999	\$58.00	\$145.00
35,000 -49,999	\$41.50	\$140.00
50,000 -74,999	\$37.50	\$130.00
75,000 -99,999	\$36.00	\$125.00
100,000 -199,999	\$34.50	\$120.00
200,000 -299,999	\$33.00	\$115.00
300,000 -500,00	\$31.50	\$110.00

The single sheet insert program is completely customizable to fit any campaign need.

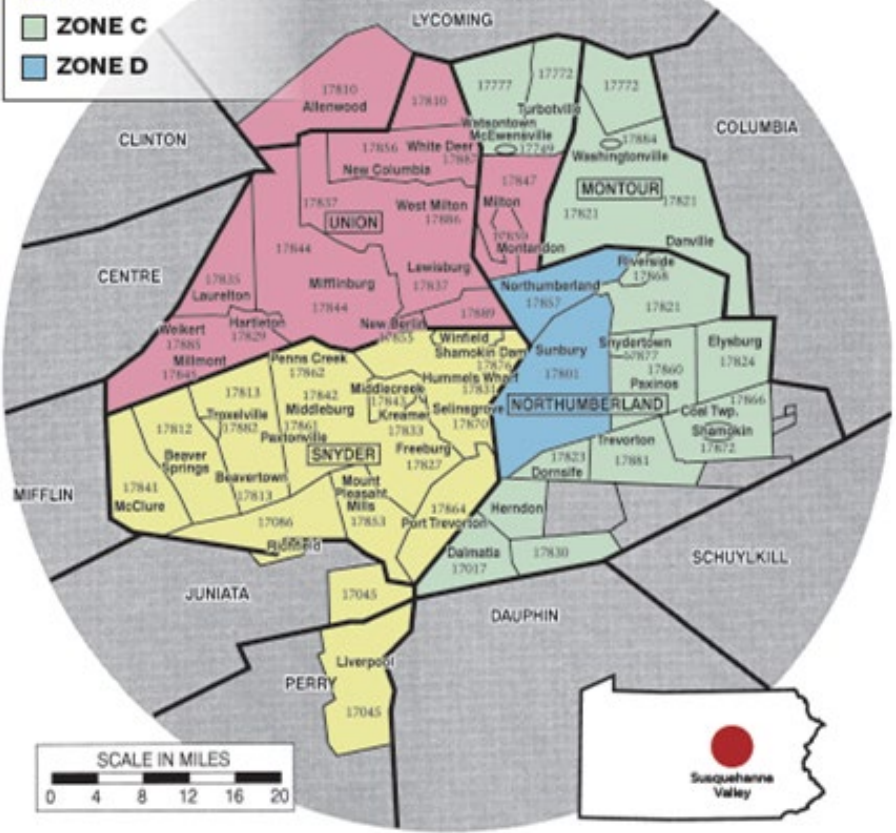
Like any “buy in bulk” concept, the more inserts purchased the cheaper the cost.

The total amount of inserts can all be purchased and inserted all at one time OR the total amount can be spread out over the entire campaign length whether that is 3 months or 12 months.

This makes it so that any size business can participate in the program.

# PRE-PRINT ZONES

- ZONE A
- ZONE B
- ZONE C
- ZONE D



**BENEFIT:** This type of advertising can be **ZONED** giving your print a targeted approach.

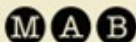
**REVENUE:** Jan. 2018 – Dec. 2018 : \$9,130  
Jan. 2019 – Present: \$31,835

What we did to make this program successful was have the clients purchase larger quantities of inserts and then insert them throughout the year instead of all at one time. This can make \$1452.50 total cost to \$200 per month.

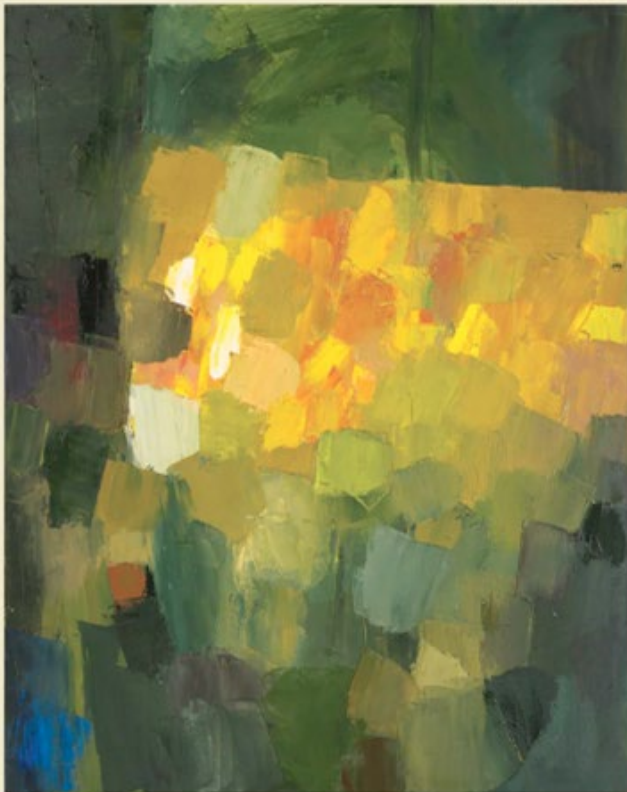
The program can be used for branding and awareness, upcoming events, coupons, employment/job fair, and even to promote sponsorship for an event.

Evelyn Twitchell  
FIELD NOTES

10/03/19 – 01/11/20



Milton Art Bank  
23 South Front Street  
Milton, PA 17847  
www.miltonartbank.com  
Thu, Fri, Sat 12-6pm  
ALWAYS FREE AND  
OPEN TO THE PUBLIC



*Outside, 2018*  
Oil on canvas, 28 x 22 inches

EXAMPLE FRONT

## 2019 EXHIBITIONS AND EVENTS AT MAB

VISIT [www.miltonartbank.com](http://www.miltonartbank.com) FOR DETAILS

**Cookie Tongue; April 20th, 8pm, 2019**

*Folk songs, fairytales, and magic brought to life through theater, puppetry, dance, poetry, and animation.*

**Norman Westberg; May 28th, 8pm, 2019**

*SWANS guitarist creates an echoing universe of deep texture and harmonic intensity that drives the listener towards reductive transcendence.*

**Kim Beck; July 11th–September 21st, 2019**

*An exhibition examining the frayed edges of an inhabited landscape, bringing the ordinary and overlooked into focus.*

**Evelyn Twitchell; October 3rd, 2019–January 11th, 2020**

*Paintings that explore the metaphoric essences of nature.*

**Milton Fringe Festival; October 10th, 11th, 12th, 2019**

*An interactive, engaging, and inclusive performance-based festival.*



Milton Art Bank  
23 South Front Street  
Milton, PA 17847  
www.miltonartbank.com  
info@miltonartbank.com  
878 416-6712

Thu, Fri, Sat 12-6pm  
ALWAYS FREE AND  
OPEN TO THE PUBLIC

The Milton Art Bank (MAB) is a space for art located in a converted 19th century bank building. MAB's exhibition and performance programming encompasses a broad range of genres and styles, including painting, sculpture, video, dance, music, site-specific installations, and historical surveys. Through its diverse exhibitions, MAB aspires to promote an engagement with art in all its many forms.



Milton Art Bank  
23 South Front Street  
Milton, PA 17847  
www.miltonartbank.com  
info@miltonartbank.com  
878 416-6712

Thu, Fri, Sat 12-6pm  
ALWAYS FREE AND  
OPEN TO THE PUBLIC

EXAMPLE BACK



### GREAT DANE EMPLOYS:

- › TRAILER BUILDERS/ASSEMBLERS
- › MIG WELDERS
- › SPRAY PAINTERS
- › MAINTENANCE TECHNICIANS AND MORE!



GREAT DANE NEEDS HANDS-ON INDIVIDUALS WHO ARE INTERESTED IN LEARNING A VARIETY OF SKILLS IN A MANUFACTURING SETTING.

### WE OFFER:

- › 4-DAY WORK WEEK
- › COMPETITIVE WAGES & BONUS OPPORTUNITIES
- › HEALTH, DENTAL, VISION & LIFE INSURANCE
- › PENSION PLAN AND 401K MATCH
- › PAID HOLIDAYS & VACATION



EXAMPLE FRONT

[GREATDANE.COM/CAREERS](http://GREATDANE.COM/CAREERS) | SEARCH "ELYSBURG, PA"

207 PROGRESS ROAD,  
ELYSBURG  
PA 17824



APPLY AT:  
[WWW.GREATDANE.COM/CAREERS](http://WWW.GREATDANE.COM/CAREERS)  
SEARCH "ELYSBURG, PA"

# Great Dane

MANUFACTURING



### OUR STORY

Great Dane, a nationwide manufacturer of freight trailers is proud to employ over 200 Team Members at the Elysburg production facility. When you see the Great Dane logo on the highway, it's likely that fabricators, assemblers, welders, spray painters and Team leaders from your town had a hand in building it. A Great Dane maintenance technician, engineer, supply chain, or resource person may be your neighbor.

Great Dane fosters an environment where employees can innovate and build quality into equipment our customers trust. The Elysburg facility has manufactured thousands of safe and reliable trailers on one shift over the past 3 years. We are happy to work a four-day week and spend weekends with our families and friends.

Great Dane carries a legacy of opportunity and a commitment to our hardworking employees. Anyone who joins our Team will learn, develop and participate in supplying premier freight trailers to help fuel the economy. A Great Dane career at Elysburg: Locally grown, nationally recognized!

EXAMPLE BACK